



ZACHARITSA LIVE-WORK

One bedroom, 86 sqm / 92 sqft

A home-work-shop hybrid with large windows and a direct entrance from the street, in an area nicknamed "Little Paris". A short walk to the scenic trails of Filopappou Hill with panoramic views of the city.

OVERVIEW

Three levels
Mezzanine bedroom with balcony
Subterranean bathroom with bath
Street-facing workspace
Garden view

AMENITIES

Premium appliances
Dishwasher
Bar fridge
Oven and stovetop
Washer and dryer
Air conditioning
Ceiling fan
Central heating
Smoke/carbon monoxide detector





THE SPACE

Split over three levels connected by a spiral staircase, the space includes a mezzanine bedroom with a balcony, a flexible ground floor with a kitchen and live-work space, a subterranean bathroom with a big bath, and a shared courtyard. Its direct connection with the street allows for uses beyond the domestic, such as an exhibition space, a shop, a workshop, a place to write or a place to host dinner.



THE MATERIALS

The original steel spiral staircase, marble window sills and terrazzo floors are interwoven with new terrazzo flooring and reclaimed marble patchworked tiles. The kitchen's reclaimed marble workbench and sink sit on brickwork and textured concrete cast on-site. The subterranean bathroom's new concrete bath sits on old and introduced marble tiles and slabs. The space is furnished with found European mid-century furniture, objects and artworks sourced or made locally, and shared with plants chosen by Kopria plant shop.



THE BUILDING

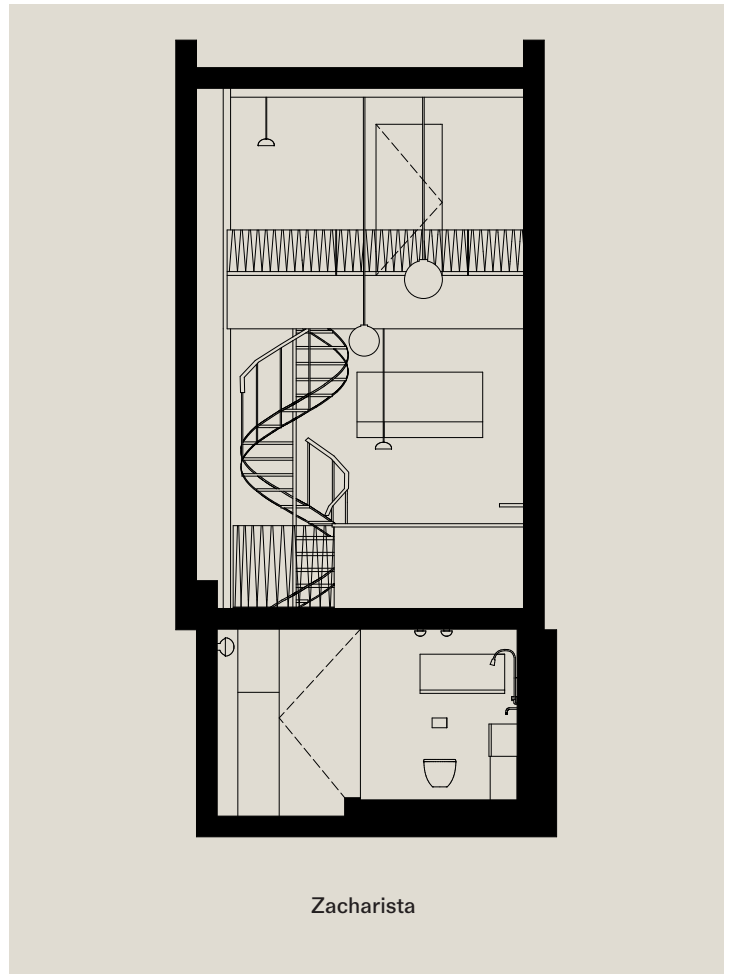
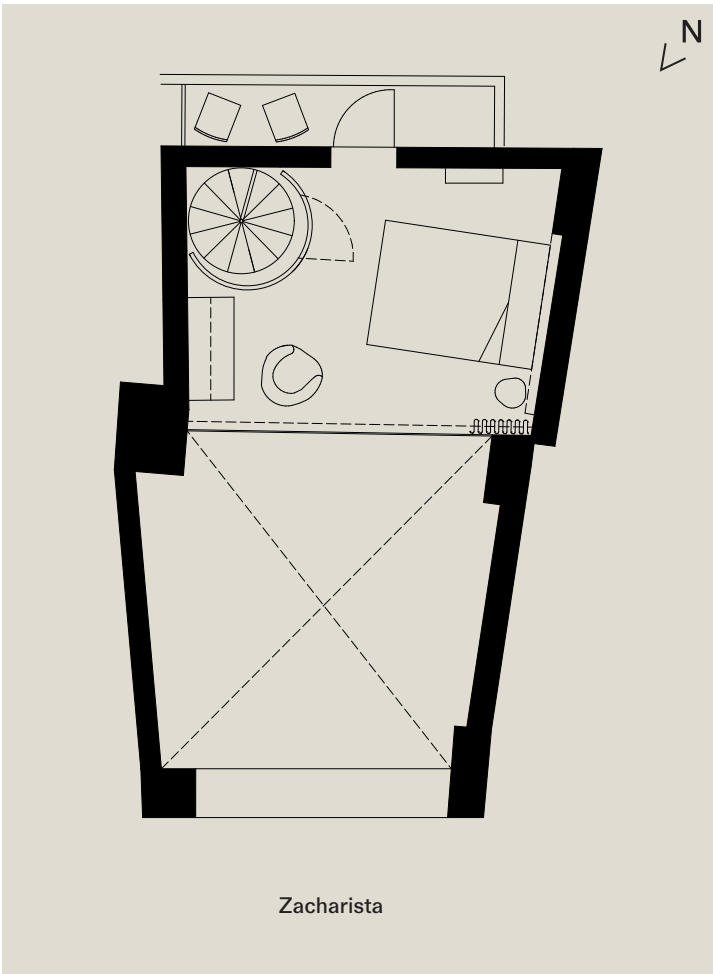
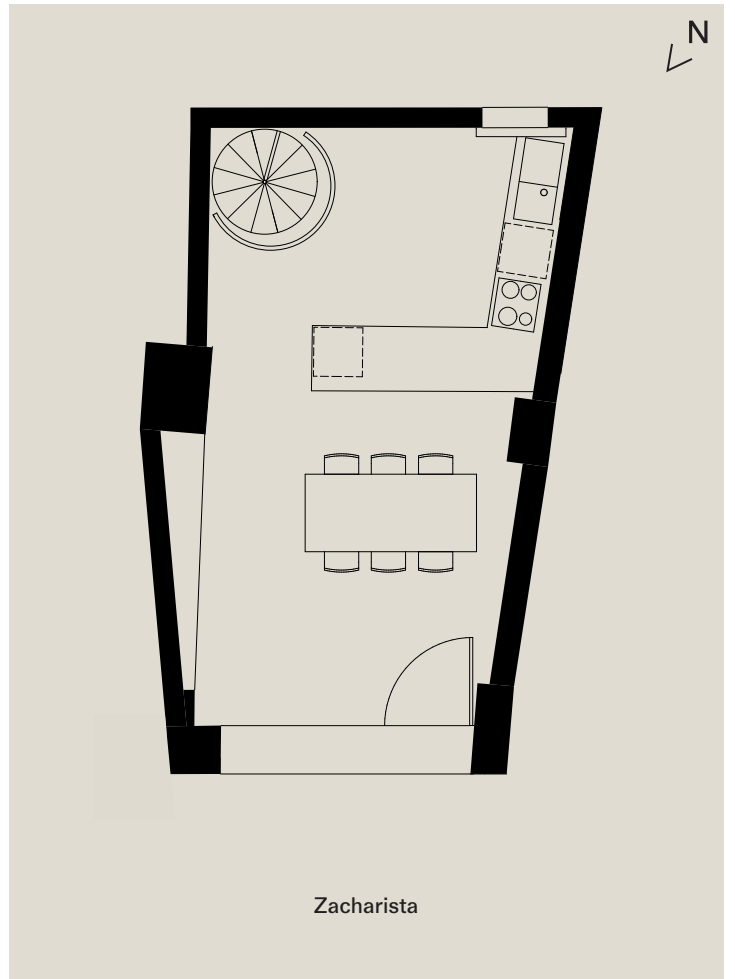
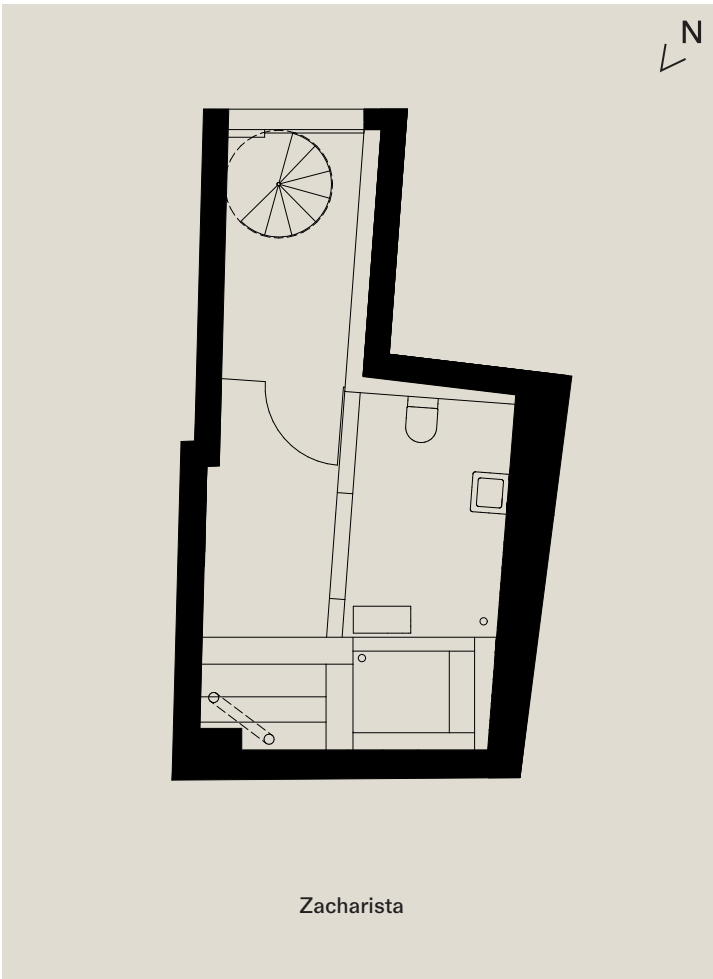
Zacharitsa Live-Work began its life as part of a typical post-war polykatoikia (apartment building), built in 1979. It was owned and occupied by a craftswoman who made and sold crafts for weddings and christenings. A recent refurbishment in collaboration with London-based architecture practice Royffe Flynn pays respect to the building's original architecture and purpose, while updating with modern amenities.

THE NEIGHBOURHOOD

Zacharitsa Live-Work can be found in the tree-lined slopes of Koukaki. It is a short walk to Filopappou Hill, the Acropolis, and the Syngrou-Fix and Acropolis metro stations.









ABOUT MOLONGLO

Molonglo has been operating in Athens since 2017. Our ambition is to respect Athens's many histories, and for its past and present to coexist. We want to uphold traditional ways of living by employing non-traditional architectural formats. We want to advocate for Athens and support it in finding ways of engaging with opportunities, post-economic crisis, in appropriate and gentle ways that preserve its everyday rhythm and culture.

For more information contact:
athens@molonglo.com